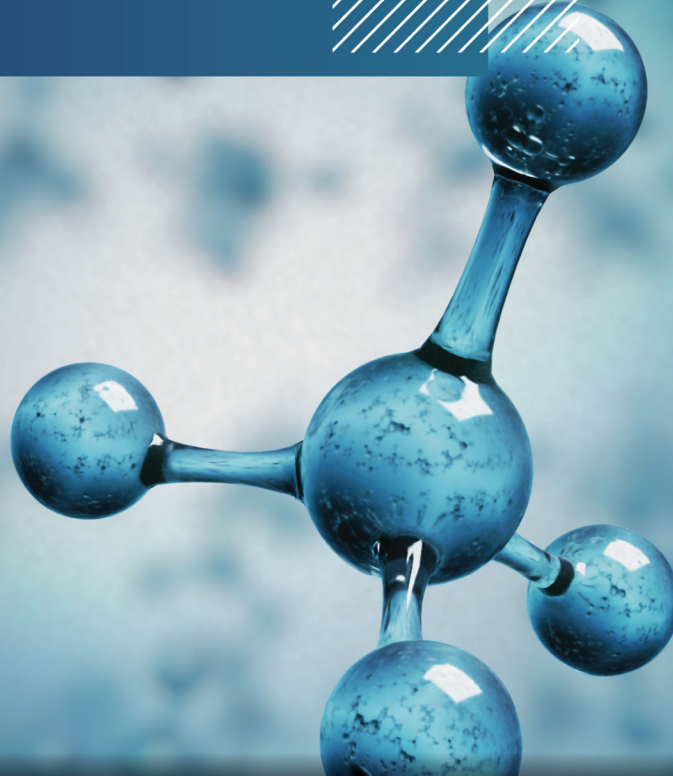




ALKEM
Activa

Innovative. Reliable. Sustainable.



Innovating Health Solutions for **Everyone, Everywhere**

API Product List



Commercial APIs

S.No	Product	Therapeutic Category	US DMF	CEP	ASMF	JDMF	China DMF
01	Amlodipine Benzoate	Anti Hypertensive	✓				
02	Amlodipine Besylate	Anti Hypertensive	✓	*			
03	Apremilast	Anti Inflammatory	✓			*	
04	Aripiprazole	Atypical Antipsychotic	✓	*	✓		
05	Azilsartan Kamedoxomil	Anti Hypertensive	✓				
06	Bempedoic Acid	Anti Hyperlipidemic	✓				
07	Cannabidiol	Antiepileptic	✓				
08	Dabigatran Etxilate Mesylate	Anti Coagulant	✓				
09	Dalfampridine	Multiple Sclerosis	✓		✓		
10	Dexmethylphenidate Hydrochloride	Psychostimulant	✓				
11	Dronedarone	Antiarrhythmic	✓				
12	Duloxetine Hydrochloride	Anti Depressant	✓	*	✓		
13	Eluxadoline	Irritable Bowel Syndrome	✓				
14	Esketamine Hydrochloride	Anesthetic & Anti Depressant	✓	*			
15	Esomeprazole Magnesium	Proton pump inhibitors	✓	*			
16	Lanthanum Carbonate Octahydrate	Phosphate binder	✓			*	
17	Lisdexamfetamine Dimesylate	Psychostimulant	✓				
18	Mesalamine	Anti Inflammatory	✓	*			
19	Methylphenidate Hydrochloride	Psychostimulant	✓	*			
20	Olanzapine	Atypical Antipsychotic					
21	Rasagiline Mesylate	Antiparkinsonian	✓		✓	*	*
22	Riluzole	Amyotrophic Lateral Sclerosis	✓		✓		*
23	Rizatriptan Benzoate	Anti Migraine	✓	*			
24	Sodium Oxybate	Anti Narcoleptic	✓		✓		
25	Solriamfetol Hydrochloride	Anesthetic & Anti Depressant	✓				
26	Tapentadol	Analgesic	✓				
27	Tolvaptan	Vasopressin Antagonist	✓		✓		

* Under Filing



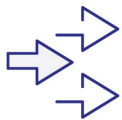
DISCLAIMER: Products protected by valid patents are not offered for sale in countries where the sale of such products constitutes a patent infringement and liability for infringement is exclusively understood at buyer's risk.

Upcoming APIs

S.No	Product	Therapeutic Category	Tech Pack
01	Azilsartan	Anti Hypertensive	✓
02	Eslicarbazepine	Anti Convulsant	✓
04	Ezetimibe	Antihyperlipidemic	✓
04	Lurasidone	Anti Psychotic	✓
05	Nebivolol Hydrochloride	Anti Hypertensive	✓
06	Quetiapine Fumarate	Atypical Antipsychotic	✓
07	Rabeprazole Sodium	Proton pump inhibitors	✓

Under Development APIs

S.No	Product	Therapeutic Category
01	Apixaban	Anti Coagulant
02	Bupropion Hydrochloride	Anti Depressant
03	Candesartan	Anti Hypertensive
04	Dapaglifozin	Anti Diabetic
05	Edoxaban Tosylate	Anti Coagulant
06	Empagliflozin	Anti Diabetic
07	Isavuconazonium Sulfate	Anti Fungal
08	Ivacaftor	Cystic Fibrosis
09	Lercanidipine Hydrochloride	Anti Hypertensive
10	Minoxidil	Anti Alopecia
11	Olmesartan Medoxomil	Anti Hypertensive
12	Sitagliptin Phosphate	Anti Diabetic
13	Solifenacin Succinate	Anti Spasmodic



**Fructooligo
Saccharides (FOS)
Variants**

FOS 90% Powder

FOS 55% Powder

FOS 90% Liquid

FOS 55% Liquid



DISCLAIMER: Products protected by valid patents are not offered for sale in countries where the sale of such products constitutes a patent infringement and liability for infringement is exclusively understood at buyer's risk.

Alkem Activa at a Glance

- ⌘ Dedicated business unit for Active Pharmaceutical Ingredients (APIs)
- ⌘ Two US FDA inspected facilities in India and one US FDA inspected facility in USA
- ⌘ Cumulative reactor capacity of 500+ KL with flexibility to scale up further at existing sites
- ⌘ Serving global markets with WHO GMP, TGA, MFDS inspections etc.
- ⌘ Written Confirmation in place for European Union
- ⌘ Successfully partnered with global big pharma companies & offering CDMO services
- ⌘ Over 10 years of successful track record in the API business
- ⌘ 70+ dedicated FTEs in R&D
- ⌘ Over 40+ active US DMFs



Manufacturing / Technical capabilities

- ⌘ 500 KL+ reaction volume in offering (30L to 6300 L size range)
- ⌘ Small molecules and Peptide manufacturing capabilities
- ⌘ Continuous manufacturing and Bio-catalysis capabilities
- ⌘ Wide range of modern analytical capabilities such as LC MS, GC MS, ICP, XRD, Ion Chromatography etc.

ESG

- ⌘ Zero Liquid Discharge facilities in all the sites (ZLD)
- ⌘ Extensive use of renewable energy sources
- ⌘ Green Chemistry has been emphasized at development stage itself
- ⌘ Efforts made to conserve water
- ⌘ Careful selection and optimal use of solvent during development



Devashish Building, Alkem House, Senapati Bapat Road, Lower Parel, Mumbai – 400 013

api@alkemactiva.com
sunil.kurup@alkemactiva.com
2023